



No Foolin Slide

Thursday March 27, 2025 — Sunday March 30, 2025

Wednesday, March 26th - Paid Warmups

Thursday, March 27th INDOOR - 10:30AM Start

Class	Added \$	Entry Fee	Judge	Pattern
Open	\$500	\$50	\$45	6
Intermediate Open	\$500	\$50	\$45	
Limited Open	\$300	\$30	\$30	
Rookie Professional	\$300	\$30	\$30	8
Rookie L1	JACKPOT	\$20	\$20	
Rookie L2	\$100	\$20	\$20	
Prime Time Prookie	JACKPOT	\$20	\$20	

Friday, March 28th INDOOR - 7 AM Start

Novice Horse Open L1	\$500	\$50	\$45	1
Novice Horse Open L2	\$500	\$50	\$45	
Novice Horse Open L3	\$300	\$30	\$30	
Novice Horse Non-Pro L1	\$500	\$50	\$45	
Novice Horse Non-Pro L2	\$500	\$50	\$45	
Novice Horse Non-Pro L3	\$300	\$30	\$30	
Open	\$1,000	\$100	\$75	12
Intermediate Open	\$500	\$50	\$45	
Limited Open	\$300	\$30	\$25	
Rookie Professional	\$300	\$30	\$25	

Friday, March 28th COVERED - 8:30 AM Start

Green Rider 1	JACKPOT	\$20	-	13
Green Rider 2	JACKPOT	\$20	-	
Green Horse	JACKPOT	\$20	-	

All Classes Close at 6pm the evening prior.

JUDGES

Eric Laporte, Mark Turner & Herm Sherwin

Stall/Shavings/Camper Reservations:

Complete forms on www.EPRHA.com
an email is automatically sent to

Flossie Ale, DREAM PARK

fale@gcianj.com - 609-970-7209

Stall:\$185

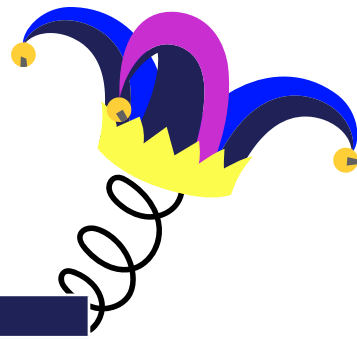
Camper:\$165

Paid Warmups (Wednesday) Contact:

Jennifer Geedy - 717-668-5083

Banquet

Friday, March 28th
6 pm @ Holiday Day Inn



Saturday, March 29th INDOOR - 8 AM Start

Non-Pro	\$500	\$50	\$45	7
Intermediate Non-Pro	\$500	\$50	\$45	
Limited Non-Pro	\$300	\$30	\$25	
Prime Time Non-Pro	\$300	\$30	\$25	
Masters Non-Pro	\$300	\$30	\$25	
Legends Non-Pro	\$300	\$30	\$25	
Novice Horse Open L1	\$500	\$50	\$45	
Novice Horse Open L2	\$1000	\$100	\$75	15
Novice Horse Open L3	\$300	\$30	\$30	
Novice Horse Non-Pro L1	\$500	\$50	\$45	
Novice Horse Non-Pro L2	\$1000	\$100	\$75	
Novice Horse Non-Pro L3	\$300	\$30	\$30	
Ed Galbraith Memorial Pro- Am L2	\$1000	\$100	\$75	17
Ed Galbraith Memorial Pro- Am L4	\$2500	\$150	\$75	

Saturday, March 29th COVERED - 8:30 AM Start

Youth 13 & U	POINTS	\$10	-	2
Youth 14-18	POINTS	\$10	-	
Youth Rookie	POINTS	\$10	-	
Short Stirrup	POINTS	\$10	-	A
Jr Sliders	POINTS	\$10	-	TBD
Future Sliders	-	-	-	
Rookie L1	JACKPOT	\$20	\$20	3
Rookie L2	\$100	\$20	\$20	
Prime Time Prookie	JACKPOT	\$20	\$20	

Sunday, March 30th INDOOR - 7:30 AM START

Green Rider 1	JACKPOT	\$20	-	11
Green Rider 2	JACKPOT	\$20	-	
Green Horse	JACKPOT	\$20	-	
Youth 13 & U	POINTS	\$10	-	8
Youth 14-18	POINTS	\$10	-	
Youth Rookie	POINTS	\$10	-	
Short Stirrup	POINTS	\$10	-	B
Jr Sliders	POINTS	\$10	-	TBD
Future Sliders	-	-	-	

Sunday 11-3-2024 COVERED - 7:30 AM START

Non-Pro	\$500	\$50	\$45	15
Intermediate Non-Pro	\$500	\$50	\$45	
Limited Non-Pro	\$300	\$30	\$25	
Prime Time Non-Pro	\$300	\$30	\$25	
Masters Non-Pro	\$300	\$30	\$25	
Legends Non-Pro	\$300	\$30	\$25	

ATTENTION: ALL DOGS MUST BE ON A LEASH. IF ANY DOG ATTACKS OCCUR ON THE SHOW GROUNDS, THE OWNER OF THE DOG IS LIABLE.